



# BelGAS™

A DIVISION OF MARSH BELLOFRAM



# P627





# Flow capacities of natural gas (0.6 S.G.) in SCFH<sup>1</sup>

Outlet Pressure Range	Outlet Pressure Setting		Inlet Pressure		3/4 Inch Body Size					1 Inch Body Size					
					Port Diameter, inches /mm					Port Diameter, inches /mm					
	psig	BAR	psig	BAR	1/8 3.2	3/16 4.8	1/4 6.4	3/8 9.5	1/2 12.7	1/8 3.2	3/16 4.8	1/4 6.4	3/8 9.5	1/2 12.7	
5 to 20 psig <sup>2</sup> (0.34 to 1.4 BAR)	5 <sup>3</sup>	0.34	10	0.69	320	700	1060	1540	1900	330	710	1100	1900	2500	
			15	1.0	330	810	1300	2150	3350	390	890	1600	2500	3350	
			20	1.4	460	1140	1800	3050	4350	500	1160	2060	3400	4450	
			30	2.1	610	1530	2490	3880	6850	670	1560	2800	4750	6900	
			60	4.1	1170	2550	4240	6270	7370	1170	2600	4710	8140	13,700	
			75	5.2	1410	3020	5100	6620	7700	1410	3150	5710	9790	14,500	
				100	6.9	1800	3800	5980	7440	7900	1800	4070	7310	12,500	16,000
		10	0.69	15	1.03	320	800	1290	2100	3300	375	880	1590	2480	3300
	20			1.4	455	1130	1790	3000	4300	490	1150	2050	3380	4410	
	30			2.1	610	1530	2480	3860	6830	670	1560	2800	4720	6840	
	60			4.1	1170	2550	4240	6270	7370	1170	2600	4710	8140	13,700	
	75			5.2	1410	3020	5100	6620	7700	1410	3150	5710	9790	14,500	
	100			6.9	1800	3800	5980	7440	7900	1800	4070	7310	12,500	16,000	
	150			10.3	2580	5700	7130	8180	8200	2580	5850	10,500	17,000	18,000	
	200			13.8	3370	6970	7250	8200	8300	3370	7630	13,700	18,000	18,500	
	300			20.7	4910	8000	8050	8250		4910	11,200	19,800	20,000		
	500			34.5	8090	8060	8100			8090	15,700	20,000			
	750	51.7	8930	8950				12,000	18,000						
	1000	69.0	10,300					14,000							
		20	1.4	30	2.1	620	1400	2490	4360	6290	620	1450	2580	4360	6290
	50			3.4	1000	2280	4010	7870	8500	1000	2280	4090	7870	14,100	
	60			4.1	1170	2640	4680	8340	8940	1170	2640	4750	9690	14,500	
	100			6.9	1800	3980	7220	11,500	12,600	1800	4070	7310	13,900	23,300	
	150			10.3	2580	5850	10,400	12,100	13,100	2580	5850	10,500	17,700	34,200	
	200			13.8	3370	7340	12,000	13,200	13,700	3370	7630	13,700	26,600	39,100	
	300			20.7	4910	11,200	13,000	15,600		4910	11,200	20,100	37,000		
	500			34.5	8090	18,300	15,100			8090	18,300	32,900			
	750	51.7	12,000	14,200				12,000	23,600						
	1000	69.0	14,600					16,000							
	15 to 40 psig (1.0 to 2.8 BAR)	40	2.8	60	4.1	1090	2530	4350	8140	9420	1090	2530	4510	9290	9420
75				5.2	1370	3080	5510	10,300	13,600	1370	3080	5640	10,800	16,500	
100				6.9	1790	4070	7220	13,200	15,300	1790	4070	7310	14,700	21,900	
150				10.3	2580	5850	10,400	17,400	18,200	2580	5850	10,500	20,500	34,500	
200				13.8	3370	7630	13,500	18,000	18,500	3370	7630	13,700	27,100	46,400	
300				20.7	4910	11,200	18,500	20,000	20,700	4910	11,200	20,100	40,100	67,100	
500				34.5	8090	18,300	24,000	27,000		8090	18,300	32,900	63,900		
750				51.7	12,000	23,000	24,200			12,000	27,200	39,400			
1000				69.0	16,000	24,400				16,000	36,100				
1250				86.2	18,000					19,000					
1500	103	21,000					22,000								
35 to 80 psig (2.4 to 5.5 BAR)	60	4.1	75	5.2	1230	2760	4750	8620	15,200	1230	2760	4880	8630	16,100	
			100	6.9	1740	4010	6990	12,800	17,300	1740	4010	7000	13,000	19,300	
			150	10.3	2580	5850	10,300	18,600	23,000	2580	5850	10,500	18,900	32,800	
			200	13.8	3370	7630	13,500	21,600	27,400	3370	7630	13,700	24,000	42,200	
			300	20.7	4910	11,200	19,800	26,100	30,100	4910	11,200	20,100	32,500	69,100	
			500	34.5	8090	18,300	28,100	28,900	33,400	8090	18,300	32,900	64,000	94,300	
			750	51.8	12,000	26,300	30,000	37,000	45,000	12,000	27,200	43,380	66,000	130,000	
			1000	69.0	16,000	30,000	31,200	37,400		16,000	36,100	50,300	67,700		
			1250	86.2	19,000	31,600	34,000			19,000	45,000	57,000			
	1500	103	22,000	30,400	36,000			22,000	54,000	63,000					
	1750	121	25,000	34,000				25,000	63,000						
	2000	138	28,000					28,000							
		80	5.5	100	5.2	1600	3750	6490	12,200	17,300	1600	3750	6650	12,200	18,600
	150			10.3	2580	5850	10,200	19,600	25,700	2580	5850	10,500	21,100	33,600	
	200			13.8	3370	7630	13,500	25,400	29,300	3370	7630	13,700	28,400	44,100	
	300			20.7	4910	11,200	19,800	32,700	33,500	4910	11,200	20,100	43,300	75,400	
	500			34.5	8090	18,300	31,900	36,000	36,700	8090	18,300	32,900	71,600	110,000	
	750			51.8	12,000	27,200	35,000	44,000	46,000	12,000	27,200	48,900	105,500	135,000	
1000	69.0			16,000	36,100	38,000	56,200		16,000	36,100	64,900	118,000			
1250	86.2			19,000	37,000	40,000			19,000	45,000	80,000				
1500	103			22,000	38,000	44,000			22,000	54,000	96,000				
1750	121	25,000	42,000				25,000	63,000							
2000	138	28,000					28,000								
70 to 150 psig (4.8 to 10.3 BAR)	100	6.9	150	10.3	2510	5540	8710	16,000	20,300	2510	5540	8710	16,000	24,000	
			200	13.8	3370	7630	12,000	21,300	25,700	3370	7630	12,000	21,300	34,100	
			300	20.7	4910	11,200	19,400	30,000	31,700	4910	11,200	19,400	30,100	53,200	
			500	34.5	8090	18,300	31,800	39,000	39,200	8090	18,300	31,800	66,500	83,900	
			750	51.8	12,000	27,200	39,000	39,200	45,900	12,000	27,200	47,300	95,300	117,000	
			1000	69.0	16,000	36,100	40,000	40,500	47,000	16,000	36,100	59,700	100,000	120,000	
			1250	86.2	19,000	39,000	40,500	41,000		19,000	45,000	72,000	114,000		
			1500	103	22,000	43,000	44,000			22,000	54,000	86,000			
			1750	121	25,000	45,000	47,000			25,000	63,000	95,000			
			2000	138	28,000	46,000				28,000	71,000				

- Capacity is based on 20 percent droop unless otherwise noted below.
- For pressure setting under 10 psig (0.69 BAR) limit the input pressure to 100 psig (6.9 BAR) to obtain the setpoint.
- For 5 psig (0.34 BAR) pressure set point, the droop is 2 psig (0.14 BAR)

# Flow capacities of natural gas (0.6 S.G.) in SCFH<sup>1</sup>

Outlet Pressure Range	Outlet Pressure Setting		Inlet Pressure		3/4 Inch Body Size					1 Inch Body Size				
					Port Diameter, inches /mm					Port Diameter, inches /mm				
	psig	BAR	psig	BAR	1/8 3.2	3/16 4.8	1/4 6.4	3/8 9.5	1/2 12.7	1/8 3.2	3/16 4.8	1/4 6.4	3/8 9.5	1/2 12.7
70 to 150 psig (4.8 to 10.3 BAR)	125	8.6	150	10.3	2340	5340	9130	15,700	20,800	2340	5340	9470	15,700	20,800
			200	13.8	3320	7550	13,160	22,500	28,600	3320	7550	13,400	28,100	32,800
			300	20.7	4910	11,200	19,800	32,700	38,000	4910	11,200	20,100	36,300	52,600
			500	34.5	8090	18,300	32,500	43,800	51,700	8090	18,300	32,900	70,800	109,000
			750	51.8	12,000	27,200	48,300	49,900	71,400	12,000	27,200	48,900	104,000	158,000
			1000	69.0	16,000	36,100	50,000	52,900	72,000	16,000	36,100	64,800	138,000	160,000
			1250	86.2	19,000	45,000	53,000	58,000		19,000	45,000	80,000	145,000	
			1500	103	22,000	51,000	56,000			22,000	54,000	96,000		
	1750	121	25,000	52,000	60,000			25,000	63,000	112,000				
	2000	138	28,000	53,000				28,000	71,000					
	150	10.3	200	13.8	3200	7290	12,500	21,400	30,600	3200	7290	12,900	21,400	33,600
			300	20.7	4910	11,200	17,200	34,700	46,000	4910	11,200	17,200	40,100	55,900
			500	34.5	8090	18,300	32,500	48,900	59,700	8090	18,300	32,900	70,300	111,000
			750	51.8	12,000	27,200	48,300	59,000	72,000	12,000	27,200	48,900	104,000	160,000
			1000	69.0	16,000	36,100	64,100	81,100	85,000	16,000	36,100	64,800	138,000	162,000
			1250	86.2	19,000	45,000	68,000	90,000		19,000	45,000	80,000	150,000	
1500			103	22,000	54,000	72,000			22,000	54,000	96,000			
1750			121	25,000	63,000	77,000			25,000	63,000	112,000			
2000	138	28,000	71,000				28,000	71,000						

Outlet Pressure Range	Outlet Pressure Setting		Inlet Pressure		P627 – 2 Inch Body Size					P627M – 2 Inch Body Size				
					Port Diameter, Inches (mm)					Port Diameter, Inches (mm)				
	psig	BAR	psig	BAR	1/8 3.2	3/16 4.8	1/4 6.4	3/8 9.5	1/2 12.7	1/8 3.2	3/16 4.8	1/4 6.4	3/8 9.5	1/2 12.7
5 to 20 psig <sup>2</sup> (0.34 to 1.4 BAR)	5 <sup>3</sup>	0.34	10	0.69	330	710	1080	1700	2400	330	710	1080	1700	2400
			15	1.0	390	890	1250	1900	2700	390	890	1250	1900	2700
			20	1.4	500	1160	1900	2650	3900	500	1160	1900	2650	3900
			30	2.1	670	1560	2800	3680	6500	670	1560	2800	3680	6500
			60	4.1	1170	2600	4750	7250	17,800	1170	2600	4750	7250	15,000
			75	5.2	1410	3150	5700	8060	22,400	1410	3150	5700	8060	17,900
	10	0.69	100	6.9	1790	4070	7310	16,200	28,700	1790	4070	7310	14,600	23,000
			15	1.03	375	880	1220	1860	2670	375	880	1220	1860	2670
			20	1.4	490	1150	1880	2610	3830	490	1150	1880	2610	3830
			30	2.1	670	1560	2760	3640	6460	670	1560	2760	3640	6460
			60	4.1	1170	2600	4750	7250	17,800	1170	2600	4750	7250	15,000
			75	5.2	1410	3150	5700	8060	22,400	1410	3150	5700	8060	17,900
			100	6.9	1790	4070	7310	16,200	28,700	1790	4070	7310	14,600	23,000
			150	10.3	2580	5850	10,500	23,300	25,900 <sup>5</sup>	2580	5850	10,500	21,000	33,000
			200	13.8	3370	7630	13,700	22,700 <sup>5</sup>	24,000 <sup>5</sup>	3370	7630	13,700	27,300	43,000
			300	20.7	4910	11,200	10,300 <sup>5</sup>	12,800 <sup>5</sup>		4910	11,200	20,100	40,100	
	20	1.4	500	34.5	8090	18,300	21,000 <sup>5</sup>		8090	18,300	32,900			
			750	51.7	12,000	27,200			12,000	27,200				
			1000	69.0	16,000				16,000					
			30	2.1	620	1450	2350	4300	6110	620	1450	2480	4300	6110
			50	3.4	1000	2280	4040	7100	12,800	1000	2280	4040	7100	12,800
			60	4.1	1170	2640	4750	8400	15,700	1170	2640	4750	8400	15,000
			100	6.9	1800	4070	7310	16,200	28,700	1800	4070	7310	14,600	23,000
			150	10.3	2580	5850	10,500	23,300	29,000 <sup>5</sup>	2580	5850	10,500	21,000	33,000
200	13.8	3370	7630	13,700	24,000 <sup>5</sup>	33,000 <sup>5</sup>	3370	7630	13,700	27,300	43,000			
15 to 40 psig (1.0 to 2.8 BAR)	40	2.8	300	20.7	4910	11,200	20,100	44,600	46,000 <sup>5</sup>	4910	11,200	20,100	40,100	71,000
			500	34.5	8090	18,300	32,900	22,000 <sup>5</sup>		8090	18,300	32,900	65,000	
			750	51.7	12,000	27,200	28,000 <sup>5</sup>			12,000	27,200	48,900		
			100	69.0	16,000	36,100				16,000	36,100			
			1250	86.2	19,000					19,000				
			1500	103	22,000					22,000				
			60	4.1	1090	2530	4370	8680	13,300	1090	2530	4370	8680	13,300
			75	5.2	1370	3080	5540	11,900	19,300	1370	3080	5540	10,700	19,300
			100	6.9	1800	4070	7310	16,200	25,400	1800	4070	7310	14,600	25,400
			150	10.3	2580	5850	10,500	23,300	41,300	2580	5850	10,500	21,000	37,000

- Capacity is based on 20 percent droop unless otherwise noted below.
- For pressure setting under 10 psig (0.69 BAR) limit the input pressure to 100 psig (6.9 BAR) to obtain the setpoint.
- For 5 psig (0.34 BAR) pressure set point, the droop is 2 psig (0.14 BAR)
- Capacities are based on 25 percent boost if setting is less than 12 psig (0.8 BAR), 3 psig (0.2 BAR) boost if setting is from 12 to 60 psig (0.2 to 4 BAR), and 5 percent boost if setting is greater than 60 psig (4 BAR).

# Flow capacities of natural gas (0.6 S.G.) in SCFH<sup>1</sup>

Outlet Pressure Range	Outlet Pressure Setting		Inlet Pressure		P627 – 2 inch Body Size					P627M – 2 Inch Body Size				
					Port Diameter, Inches (mm)					Port Diameter, Inches (mm)				
	psig	BAR	psig	BAR	1/8 3.2	3/16 4.8	1/4 6.4	3/8 9.5	1/2 12.7	1/8 3.2	3/16 4.8	1/4 6.4	3/8 9.5	1/2 12.7
35 to 80 psig (2.4 to 5.5 BAR)	60	4.1	75	5.2	1260	2760	4900	9000	12,300	1230	2760	4900	9000	12,300
			100	6.9	1740	4010	7000	15,000	20,400	1740	4010	7000	15,000	20,400
			150	10.3	2580	5850	10,500	23,300	35,200	2580	5850	10,500	23,300	35,200
			200	13.8	3370	7630	13,700	30,400	53,900	3370	7630	13,700	30,400	53,900
			300	20.7	4910	11,200	20,100	44,600	79,000 <sup>5</sup>	4910	11,200	20,100	44,600	79,000
			500	34.5	8090	18,300	32,900	73,000 <sup>5</sup>	129,000 <sup>5</sup>	8090	18,300	32,900	73,000	129,000
			750	51.8	12,000	27,200	48,900	108,000 <sup>5</sup>	188,000 <sup>5</sup>	12,000	27,200	48,900	108,000	188,000
			1000	69.0	16,000	36,100	64,800	144,000 <sup>5</sup>	250,000 <sup>5</sup>	16,000	36,100	64,800	144,000	250,000
			1250	86.2	19,000	45,000	80,000	180,000 <sup>5</sup>	316,000 <sup>5</sup>	19,000	45,000	80,000	180,000	316,000
	1500	103	22,000	54,000	96,000	216,000 <sup>5</sup>	380,000 <sup>5</sup>	22,000	54,000	96,000	216,000	380,000		
	1750	121	25,000	63,000	112,000	252,000 <sup>5</sup>	440,000 <sup>5</sup>	25,000	63,000	112,000	252,000	440,000		
	2000	138	28,000	71,000	126,000	282,000 <sup>5</sup>	500,000 <sup>5</sup>	28,000	71,000	126,000	282,000	500,000		
	80	5.5	100	5.2	1630	3750	6400	12,000	20,400	1630	3750	6400	12,800	20,400
			150	10.3	2580	5850	10,500	23,300	41,300	2580	5850	10,500	23,300	41,300
			200	13.8	3370	7630	13,700	30,400	53,900	3370	7630	13,700	30,400	53,900
			300	20.7	4910	11,200	20,100	44,600	79,000 <sup>5</sup>	4910	11,200	20,100	44,600	79,000
			500	34.5	8090	18,300	32,900	73,000 <sup>5</sup>	129,000 <sup>5</sup>	8090	18,300	32,900	73,000	129,000
			750	51.8	12,000	27,200	48,900	108,000 <sup>5</sup>	188,000 <sup>5</sup>	12,000	27,200	48,900	108,000	188,000
1000			69.0	16,000	36,100	64,800	144,000 <sup>5</sup>	250,000 <sup>5</sup>	16,000	36,100	64,800	144,000	250,000	
1250			86.2	19,000	45,000	80,000	180,000 <sup>5</sup>	316,000 <sup>5</sup>	19,000	45,000	80,000	180,000	316,000	
1500			103	22,000	54,000	96,000	216,000 <sup>5</sup>	380,000 <sup>5</sup>	22,000	54,000	96,000	216,000	380,000	
1750	121	25,000	63,000	112,000	252,000 <sup>5</sup>	440,000 <sup>5</sup>	25,000	63,000	112,000	252,000	440,000			
2000	138	28,000	71,000	126,000	282,000 <sup>5</sup>	500,000 <sup>5</sup>	28,000	71,000	126,000	282,000	500,000			
70 to 150 psig (4.8 to 10.3 BAR)	100	6.9	150	10.3	2510	5540	8600	16,000	22,000	2510	5540	8600	16,000	22,000
			200	13.8	3370	7630	13,700	22,000	33,000	3370	7630	13,700	22,000	33,000
			300	20.7	4910	11,200	20,100	35,000	65,300	4910	11,200	20,100	35,000	65,300
			500	34.5	8090	18,300	32,900	73,000	129,000	8090	18,300	32,900	73,000	129,000
			750	51.8	12,000	27,200	48,900	108,000 <sup>5</sup>	188,000 <sup>5</sup>	12,000	27,200	48,900	108,000	188,000
			1000	69.0	16,000	36,100	64,800	144,000 <sup>5</sup>	250,000 <sup>5</sup>	16,000	36,100	64,800	144,000	250,000
			1250	86.2	19,000	45,000	80,000	180,000 <sup>5</sup>	316,000 <sup>5</sup>	19,000	45,000	80,000	180,000	316,000
			1500	103	22,000	54,000	96,000	216,000 <sup>5</sup>	380,000 <sup>5</sup>	22,000	54,000	96,000	216,000	380,000
			1750	121	25,000	63,000	112,000	252,000 <sup>5</sup>	440,000 <sup>5</sup>	25,000	63,000	112,000	252,000	440,000
	2000	138	28,000	71,000	126,000	282,000 <sup>5</sup>	500,000 <sup>5</sup>	28,000	71,000	126,000	282,000	500,000		
	125	8.6	150	10.3	2340	5340	8600	16,000	24,000	2340	5340	8600	16,000	24,000
			200	13.8	3320	7550	13,000	24,000	36,000	3320	7550	13,000	24,000	36,000
			300	20.7	4910	11,200	20,100	39,000	65,300	4910	11,200	20,100	39,000	65,300
			500	34.5	8090	18,300	32,900	73,000	129,000	8090	18,300	32,900	73,000	129,000
			750	51.8	12,000	27,200	48,900	108,000 <sup>5</sup>	188,000 <sup>5</sup>	12,000	27,200	48,900	108,000	188,000
			1000	69.0	16,000	36,100	64,800	144,000 <sup>5</sup>	250,000 <sup>5</sup>	16,000	36,100	64,800	144,000	250,000
			1250	86.2	19,000	45,000	80,000	180,000 <sup>5</sup>	316,000 <sup>5</sup>	19,000	45,000	80,000	180,000	316,000
			1500	103	22,000	54,000	96,000	216,000 <sup>5</sup>	380,000 <sup>5</sup>	22,000	54,000	96,000	216,000	380,000
1750			121	25,000	63,000	112,000	252,000 <sup>5</sup>	440,000 <sup>5</sup>	25,000	63,000	112,000	252,000	440,000	
2000	138	28,000	71,000	126,000	282,000 <sup>5</sup>	500,000 <sup>5</sup>	28,000	71,000	126,000	282,000	500,000			
150	10.3	200	13.8	3200	7290	13,000	24,000	38,000	3200	7290	13,000	24,000	38,000	
		300	20.7	4910	11,200	20,100	44,600	64,200	4910	11,200	20,100	44,600	64,200	
		500	34.5	8090	18,300	32,900	73,000	129,000	8090	18,300	32,900	73,000	129,000	
		750	51.8	12,000	27,200	48,900	108,000 <sup>5</sup>	188,000 <sup>5</sup>	12,000	27,200	48,900	108,000	188,000	
		1000	69.0	16,000	36,100	64,800	144,000 <sup>5</sup>	250,000 <sup>5</sup>	16,000	36,100	64,800	144,000	250,000	
		1250	86.2	19,000	45,000	80,000	180,000 <sup>5</sup>	316,000 <sup>5</sup>	19,000	45,000	80,000	180,000	316,000	
		1500	103	22,000	54,000	96,000	216,000 <sup>5</sup>	380,000 <sup>5</sup>	22,000	54,000	96,000	216,000	380,000	
		1750	121	25,000	63,000	112,000	252,000 <sup>5</sup>	440,000 <sup>5</sup>	25,000	63,000	112,000	252,000	440,000	
		2000	138	28,000	71,000	126,000	282,000 <sup>5</sup>	500,000 <sup>5</sup>	28,000	71,000	126,000	282,000	500,000	

1. Capacity is based on 20 percent droop unless otherwise noted below.

5. Capacities are based on 25 percent boost if setting is less than 12 psig (0.8 BAR), 3 psig (0.2 BAR) boost if setting is from 12 to 60 psig (0.2 to 4 BAR), and 5 percent boost if setting is greater than 60 psig (4 BAR).



# Flow capacities of natural gas (0.6 S.G.) in SCFH<sup>1</sup>

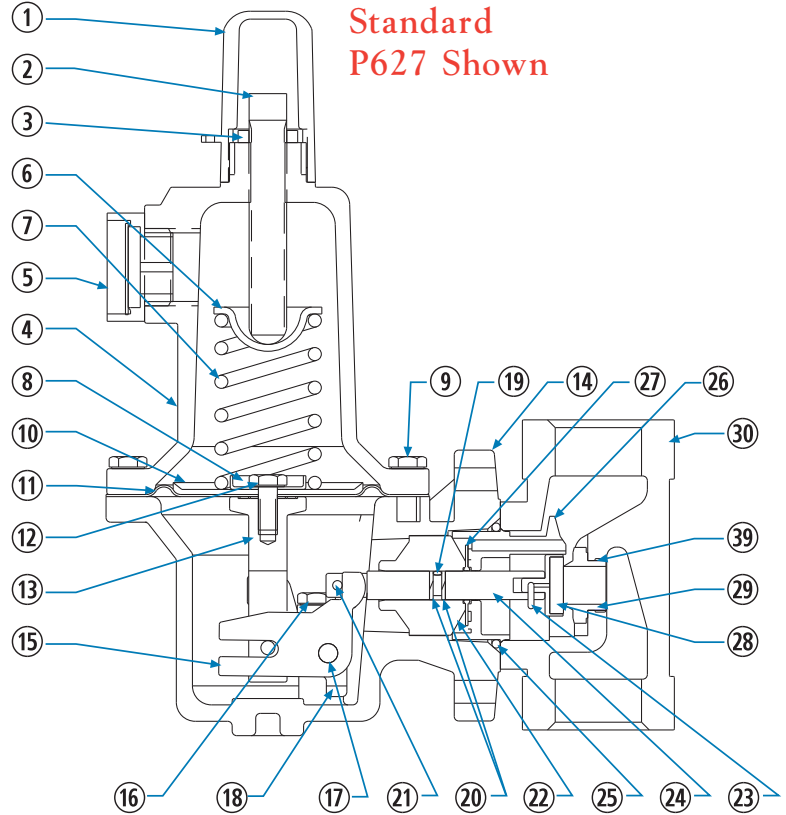
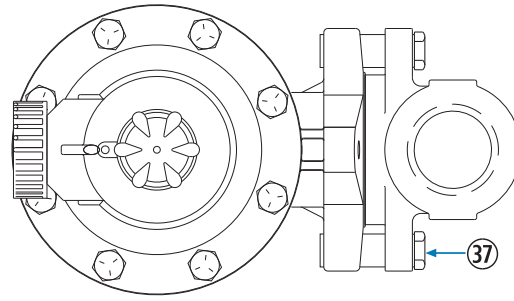
Outlet Pressure Range	Outlet Pressure Setting		Inlet Pressure		P627M – 3/4 Inch Body Size					P627M – 1 Inch Body Size					P627M – 2 Inch Body Size				
					Port Diameter, Inches (mm)					Port Diameter, Inches (mm)					Port Diameter, Inches (mm)				
	psig	BAR	psig	BAR	1/8 3.2	3/16 4.8	1/4 6.4	3/8 9.5	1/2 12.7	1/8 3.2	3/16 4.8	1/4 6.4	3/8 9.5	1/2 12.7	1/8 3.2	3/16 4.8	1/4 6.4	3/8 9.5	1/2 12.7
140 to 250 psig (9.7 to 17.2 BAR)	150	10.3	200	13.8	3200 <sup>4</sup>	7290	11,500	21,600	31,000	3200 <sup>4</sup>	7290	11,500	21,600	31,000	3200 <sup>4</sup>	7290	13,700	24,100	31,000
			250	17.2	4100 <sup>4</sup>	9200	15,400	28,600	40,000	4100 <sup>4</sup>	9200	15,400	28,600	40,000	4100 <sup>4</sup>	9200	16,100	28,600	40,000
			300	20.7	4910	11,200	19,300	31,000	46,000	4910	11,200	19,300	31,000	46,000	4910	11,200	19,300	31,000	46,000
			400	27.6	6500	14,800	24,700	40,000	50,000	6500	14,800	25,000	40,000	50,000	6500	14,800	25,000	40,000	50,000
			500	34.5	8090	18,300	29,700	51,000		8090	18,300	32,000	51,000		8090	18,300	32,000		
			750	51.7	12,000	27,200	43,000			12,000	27,200	46,000			12,000	27,200	48,000		
			1000	69.0	16,000	36,100	57,000			16,000	36,100	60,000			16,000	36,100	65,000		
			1250	86.2	19,000	45,000				19,000	45,000				19,000	45,000			
			1500	103	22,000	54,000				22,000	54,000				22,000	54,000			
			1750	121	25,000	63,000				25,000	63,000				25,000	63,000			
	2000	138	28,000					28,000					28,000						
	200	13.8	250	17.2	3850 <sup>4</sup>	8400	15,000	31,000	41,000	3850 <sup>4</sup>	8400	15,000	31,000	41,000	3850 <sup>4</sup>	8400	16,100	33,000	41,000
			300	20.7	4910 <sup>4</sup>	11,200	19,500	36,000	52,000	4910 <sup>4</sup>	11,200	19,500	36,000	52,000	4910 <sup>4</sup>	11,200	20,100	36,000	52,000
			400	27.6	6500	14,800	25,500	52,000	68,000	6500	14,800	26,500	52,000	68,000	6500	14,800	26,500	52,000	68,000
			500	34.5	8090	18,300	31,000	61,000		8090	18,300	33,000	61,000		8090	18,300	33,000	61,000	
			750	51.7	12,000	27,200	45,500			12,000	27,200	49,000			12,000	27,200	49,000		
			1000	69.0	16,000	36,100	60,000			16,000	36,100	65,000			16,000	36,100	65,000		
			1250	86.2	19,000	45,000				19,000	45,000				19,000	45,000			
			1500	103	22,000	54,000				22,000	54,000				22,000	54,000			
			1750	121	25,000	63,000				25,000	63,000				25,000	63,000			
			2000	138	28,000					28,000					28,000				
	250	17.2	300	20.7	4500 <sup>4</sup>	9900	18,500	37,000	52,000	4500 <sup>4</sup>	9900	18,500	37,000	75,000	4500 <sup>4</sup>	9900	18,500	37,000	75,000
			400	27.6	6400 <sup>4</sup>	14,300	26,000	55,000	74,000	6400 <sup>4</sup>	14,300	26,000	55,000	81,000	6400 <sup>4</sup>	14,300	26,000	55,000	81,000
			500	34.5	8090	18,300	33,000	64,000	87,000	8090	18,300	33,000	64,000	95,000	8090	18,300	33,000	64,000	95,000
			750	21.7	12,000	27,200	49,000	93,000		12,000	27,200	49,000	102,000		12,000	27,200	49,000	102,000	
			1000	69.0	16,000	36,100	65,000			16,000	36,100	65,000			16,000	36,100	65,000		
			1250	86.2	19,000	45,000	81,000			19,000	45,000	81,000			19,000	45,000	81,000		
			1500	103	22,000	54,000				22,000	54,000				22,000	54,000			
1750			121	25,000	63,000				25,000	63,000				25,000	63,000				
2000			138	28,000	71,000				28,000	71,000				28,000	71,000				
240 to 500 psig (16.5 to 34.5 BAR)			250	17.2	300	20.7	4500 <sup>4</sup>	9300	14,000	25,000	37,000	4500 <sup>4</sup>	9300	14,000	25,000	37,000	4500 <sup>4</sup>	9300	14,000
	400	27.6			6400 <sup>4</sup>	14,300	21,400	36,000	49,000	6400 <sup>4</sup>	14,300	21,400	36,000	49,000	6400 <sup>4</sup>	14,300	21,400	36,000	49,000
	500	34.6			8090	18,300	26,300	42,000	62,000	8090	18,300	26,300	42,000	62,000	8090	18,300	26,300	42,000	62,000
	750	51.7			12,000	27,200	37,100	57,000		12,000	27,200	37,100	57,000		12,000	27,200	37,100	57,000	
	1000	69.0			16,000	36,100	47,400			16,000	36,100	47,400			16,000	36,100	47,400		
	1250	86.2			19,000	45,000	57,000			19,000	45,000	57,000			19,000	45,000	57,000		
	1500	103			22,000	54,000				22,000	54,000				22,000	54,000			
	1750	121			25,000	63,000				25,000	63,000				25,000	63,000			
	2000	138			28,000	71,000				28,000	71,000				28,000	71,000			
	300	20.7			350	24.1	5150 <sup>4</sup>	11,300	18,400	31,000	45,000	5150 <sup>4</sup>	11,300	18,400	31,000	45,000	5150 <sup>4</sup>	11,300	18,400
400			27.6	6200 <sup>4</sup>	13,700	23,400	40,000	52,000	6200 <sup>4</sup>	13,700	23,400	40,000	52,000	6200 <sup>4</sup>	13,700	23,400	40,000	52,000	
500			34.5	8090	18,300	32,000	53,000	67,000	8090	18,300	32,000	53,000	67,000	8090	18,300	32,000	53,000	67,000	
750			51.7	12,000	27,200	48,000	80,000		12,000	27,200	48,000	80,000		12,000	27,200	48,000	80,000		
1000			69.0	16,000	36,100	62,000			16,000	36,100	62,000			16,000	36,100	62,000			
1250			86.2	19,000	45,000	79,000			19,000	45,000	79,000			19,000	45,000	79,000			
1500			103	22,000	54,000				22,000	54,000				22,000	54,000				
1750			121	25,000	63,000				25,000	63,000				25,000	63,000				
2000			138	28,000	71,000				28,000	71,000				28,000	71,000				
240 to 500 psig (16.5 to 34.5 BAR)			400	27.6	450	31.0	6400 <sup>4</sup>	14,000	25,000	47,000	67,000	6400 <sup>4</sup>	14,000	25,000	47,000	67,000	6400 <sup>4</sup>	14,000	25,000
	500	34.6			8090 <sup>4</sup>	18,300	32,000	54,000	77,000	8090 <sup>4</sup>	18,300	32,000	54,000	77,000	8090 <sup>4</sup>	18,300	32,000	54,000	77,000
	750	51.7			12,000	27,200	49,000	91,000		12,000	27,200	49,000	91,000		12,000	27,200	49,000	91,000	
	1000	69.0			16,000	36,100	65,000			16,000	36,100	65,000			16,000	36,100	65,000		
	1250	86.2			19,000	45,000	81,000			19,000	45,000	81,000			19,000	45,000	81,000		
	1500	103			22,000	54,000				22,000	54,000				22,000	54,000			
	1750	121			25,000	63,000				25,000	63,000				25,000	63,000			
	2000	138			28,000	71,000				28,000	71,000				28,000	71,000			
500	34.5	550	37.9	7700 <sup>4</sup>	16,800	33,000	62,000	90,000	7700 <sup>4</sup>	16,800	33,000	62,000	90,000	7700 <sup>4</sup>	16,800	33,000	62,000	90,000	
		600	47.4	8800 <sup>4</sup>	19,400	37,000	70,000	104,000	8800 <sup>4</sup>	19,400	37,000	70,000	104,000	8800 <sup>4</sup>	19,400	37,000	70,000	104,000	
		750	51.7	12,000	27,200	49,000	88,000	137,000	12,000	27,200	49,000	88,000	137,000	12,000	27,200	49,000	88,000	137,000	
		1000	69.0	16,000	36,100	65,000	130,000		16,000	36,100	65,000	130,000		16,000	36,100	65,000	130,000		
		1250	86.2	19,000	45,000	81,000			19,000	45,000	81,000			19,000	45,000	81,000			
		1500	103	22,000	54,000	97,000			22,000	54,000	97,000			22,000	54,000	97,000			
		1750	121	25,000	63,000				25,000	63,000				25,000	63,000				
		2000	138	28,000	71,000				28,000	71,000				28,000	71,000				

1. Capacity is based on 20 percent droop unless otherwise noted below.

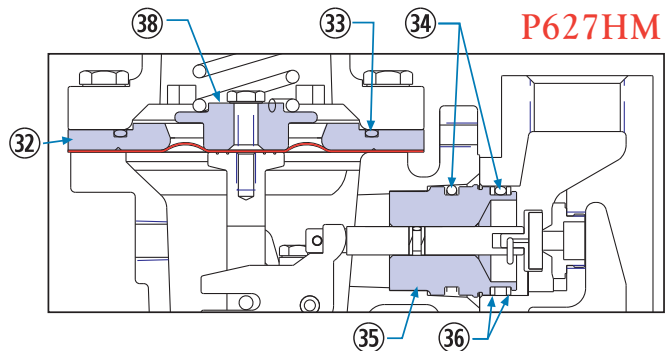
4. Outlet pressure setting may shift ±15 psig.

ITEM	DESCRIPTION	PART NUMBER
①	Cover Adj. Screw	610-053-000
②	Adjustment Screw	648-465-000
③	Locknut	634-154-000
④	Bonnet, P627 - aluminum	604-210-000
	Bonnet, P627M, P627H & P627HM - Steel	604-211-000
⑤	Vent Assembly	836-005-000
⑥	Spring Guide, Upper	626-079-000
⑦	Range Spring	
	5-20 psig (Yellow)	655-661-000
	15-40 psig (Green)	655-661-001
	35-80 psig (Blue)	655-661-002
	70-150 psig (Red)	655-661-003
	140-250 psig (Blue)	655-661-002
	240-500 psig (Red)	655-661-003
⑧	Spring Guide, Lower (P627 or P627M only)	637-306-000
⑨	Build Screw, Spring Case (8 required)	
	P627 or P627M - Aluminum	648-466-000
	P627 or P627M - Steel	648-467-003
	P627H or P627HM	648-467-002
⑩	Diaphragm Piston (P627 or P627M only)	643-191-000
⑪	Diaphragm P627 & P627M	
	Aluminum / Iron Case	618-069-000
	Steel Case	618-070-000
	Diaphragm P627H & P627HM	
	Steel Case	618-070-001
⑫	Screw, Diaphragm P627 & P627M	648-466-002
	Screw, Diaphragm P627H & P627HM	648-467-000
⑬	Post, Pusher P627 & P627M	827-005-000
	Post, Pusher P627H & P627HM	827-005-001
⑭	Diaphragm Case P627 - aluminum w/o gauge tap	629-202-000
	Diaphragm Case P627 & P627H - steel	629-203-000
	Diaphragm Case P627M & P627HM- steel	629-204-000
⑮	Lever	703-004-000
⑯	Lever Screw (2 required)	648-466-002
⑰	Pin, Lever	635-053-000
⑱	Lever Retainer	643-192-000
⑲	Stem O'Ring, nitrile	649-000-003
⑳	Stem Backup Ring, TFE (2 required)	644-047-000
㉑	Pin, Groove	635-054-000
㉒	Stem Guide - P627 & P627H	626-080-000
㉓	Pin Clip	635-055-000
㉔	Stem, 316SS	689-005-000
㉕	Diaphragm Case O'Ring, nitrile (P627 & P627H)	649-280-000
㉖	Boost Body P627 or P627H	686-003-000
㉗	Stabilizer, nitrile P627 or P627H	649-278-000
㉘	Seat assembly - aluminum holder / nitrile disk	822-019-000
	Seat assembly - aluminum / nylon	822-019-001
㉙	Seat Ring - Aluminum	
	1/8 inch	688-011-004
	3/16 inch	688-011-003
	1/4 inch	688-011-002
	3/8 inch	688-011-001
	1/2 inch	688-011-000
㉚	Body - Ductile Iron	
	3/4 inch NPT	664-280-000
	1 inch NPT	664-280-001
	2 inch NPT	664-282-000
	Body - Steel	
	3/4 inch NPT	664-281-000
	1 inch NPT	664-281-001
	2 inch NPT	664-283-000

Contact factory for NACE component part numbers.



Standard  
P627 Shown



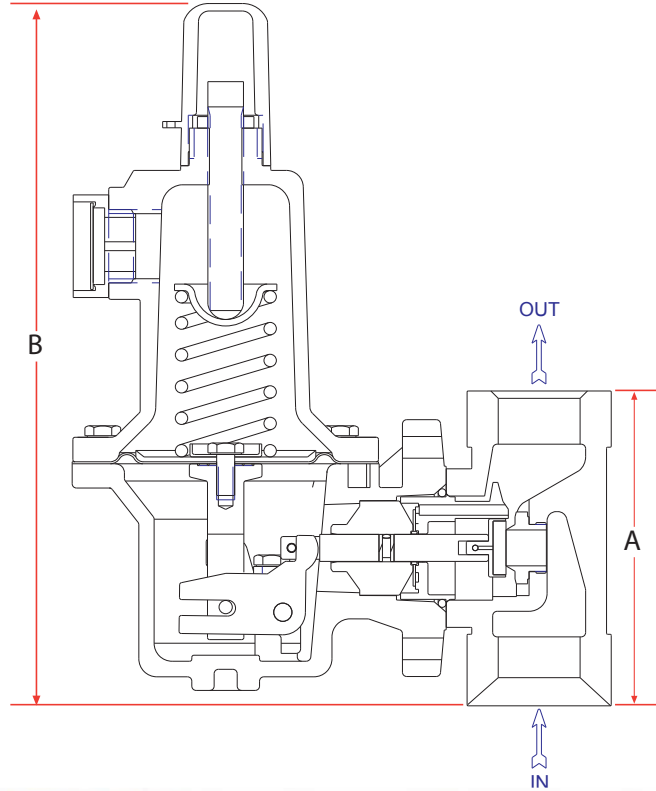
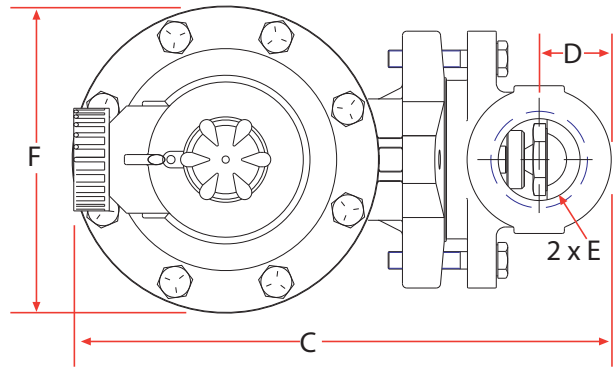
P627HM

ITEM	DESCRIPTION	PART NUMBER
①	Nameplate (not shown)	632-474-000
②	Diaphragm Spacer (P627H or P627HM only)	654-167-000
③	O'Ring, Spacer (P627H or P627HM only)	649-279-000
④	O'Ring, Throat Block (2 required)	649-281-000
⑤	Throat Block (P627M or P627HM only)	626-081-000
⑥	Backup Ring, Throat Block (2 required)	644-048-000
⑦	Build Screw, 3/4" & 1" aluminum unit (2 required)	648-466-001
	Build Screw, 2" body & all steel bodies (2 required)	648-467-001
⑧	Spring Guide, Lower (P627H & P627HM only)	637-307-000
⑨	Thread Locker	consult factory
⑩	Name Plate Drive Screw (2 required) (not shown)	648-464-000

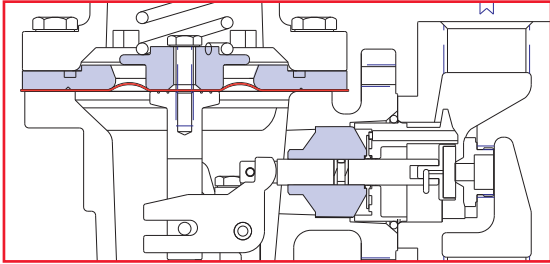
**DIMENSIONS:** Aluminum/Cast Ductile Iron Units

TYPE	BODY S		A	B	C	D	E	F*
P627	3/4"	mm	104	243	190	26	3/4	108
		inch	4.08	9.54	7.46	1.0	NP1	4.25
P627M	1"	mm	104	243	190	26	1"	108
		inch	4.08	9.54	7.46	1.0	NP1	4.25
	2"	mm	127	256	218	43	2"	108
		inch	5.0	10.0	8.56	1.69	NP1	4.25
P627H	3/4"	mm	104	250	194	26	3/4	120
		inch	4.08	9.82	7.62	1.0	NP1	4.70
P627HM	1"	mm	104	250	194	26	1"	120
		inch	4.08	9.82	7.62	1.0	NP1	4.70
	2"	mm	127	265	224	43	2"	120
		inch	5.0	10.4	8.80	1.69	NP1	4.70

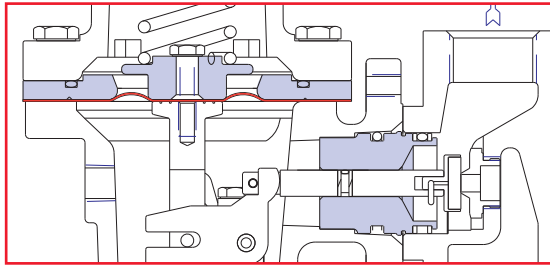
\*F Dimensions for steel P627 and P627M - 120mm/4.7 inches



**P627H**



**P627HM**



**USA**

State Route 2, Box 305  
Newell, WV 26050  
(304) 387-1200  
FAX (304) 387-4417  
info@marshbellofram.com

**Europe**

9 Castle Park, Queens Drive  
Nottingham NG2 1AH, UK  
Tel +44 (0) 115 993 3300  
Fax +44 (0) 115 993 3301  
bellofram@aol.com

**BelGAS**<sup>TM</sup>

IMPORTANT NOTICE: Our recommendations, if any, for the use of this product are based on tests believed to be reliable. The greatest care is exercised in the selection of our raw materials and in our manufacturing, no guarantee or warranty, express or implied is made as to such use or effects incidental to such use, handling or possession, or the results to be obtained, whether in accordance with the directions or claimed so to be. The manufacturer expressly disclaims responsibility therefor. Furthermore, nothing contained herein shall be construed as a recommendation to use any product in conflict with existing laws and/or patents covering any material use.

A DIVISION OF MARSH BELLOFRAM



Distributed By **FLW Inc.**

(800) 576 - 6308

www.bellofram-usa.com