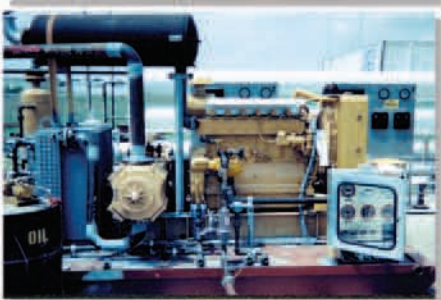




BelGAS™

A DIVISION OF MARSH BELLOFRAM

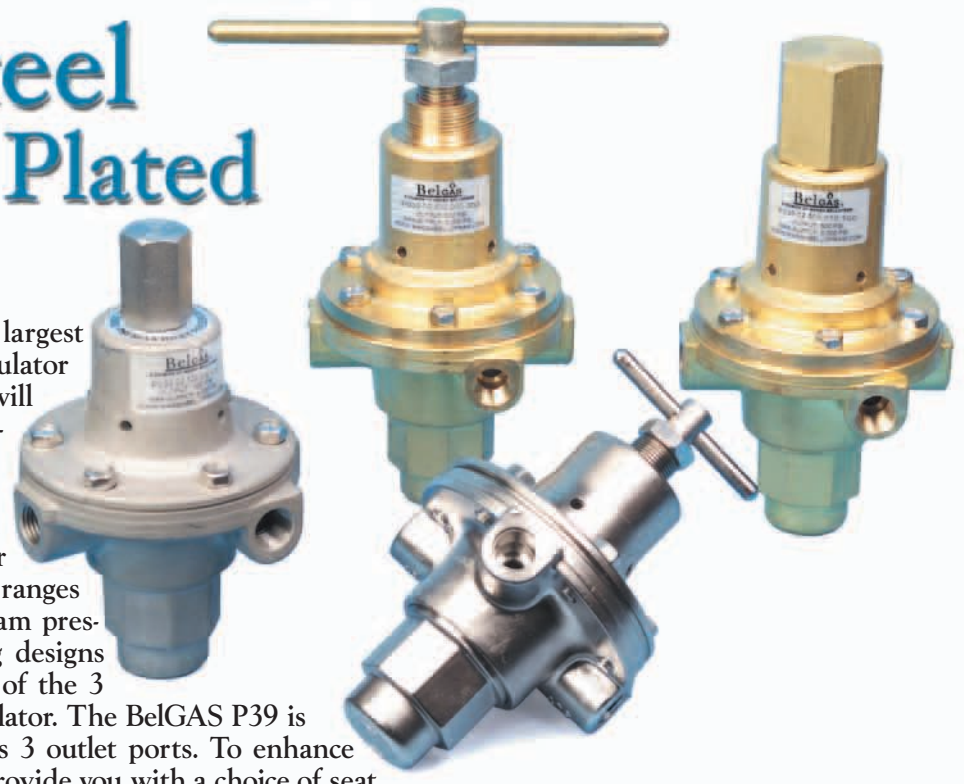


P39



Stainless Steel Nickel Plated BRASS

The BelGAS P39 regulator selection is the largest of its type in the industry. We offer this regulator in three different materials, one of which will ideally suit your application AND your budget. ALL of the P39's are offered with a minimum of five different spring ranges, with an option for a sixth range (500 psig), on our Brass and Nickel plated versions. Our broad selection of outlet pressure spring ranges allows more precise regulation of downstream pressure, hence, better process control. Piping designs can be simplified by using any one (or all) of the 3 outlet ports that come standard on the regulator. The BelGAS P39 is the ONLY regulator of this type, which has 3 outlet ports. To enhance the versatility of this regulator further, we provide you with a choice of seat materials that allows the designer to custom fit the seat material with the application. Each seat is mounted in a block that can be rotated a total of 4 times to increase the service life of the regulator. Capable of regulating inlet pressures of up to 5500 psig, the BelGAS P39 regulator should be your first choice as a first-cut regulator.



The BelGAS P39 is the ONLY regulator of this type, which has 3 outlet ports. To enhance the versatility of this regulator further, we provide you with a choice of seat materials that allows the designer to custom fit the seat material with the application. Each seat is mounted in a block that can be rotated a total of 4 times to increase the service life of the regulator. Capable of regulating inlet pressures of up to 5500 psig, the BelGAS P39 regulator should be your first choice as a first-cut regulator.

FEATURES

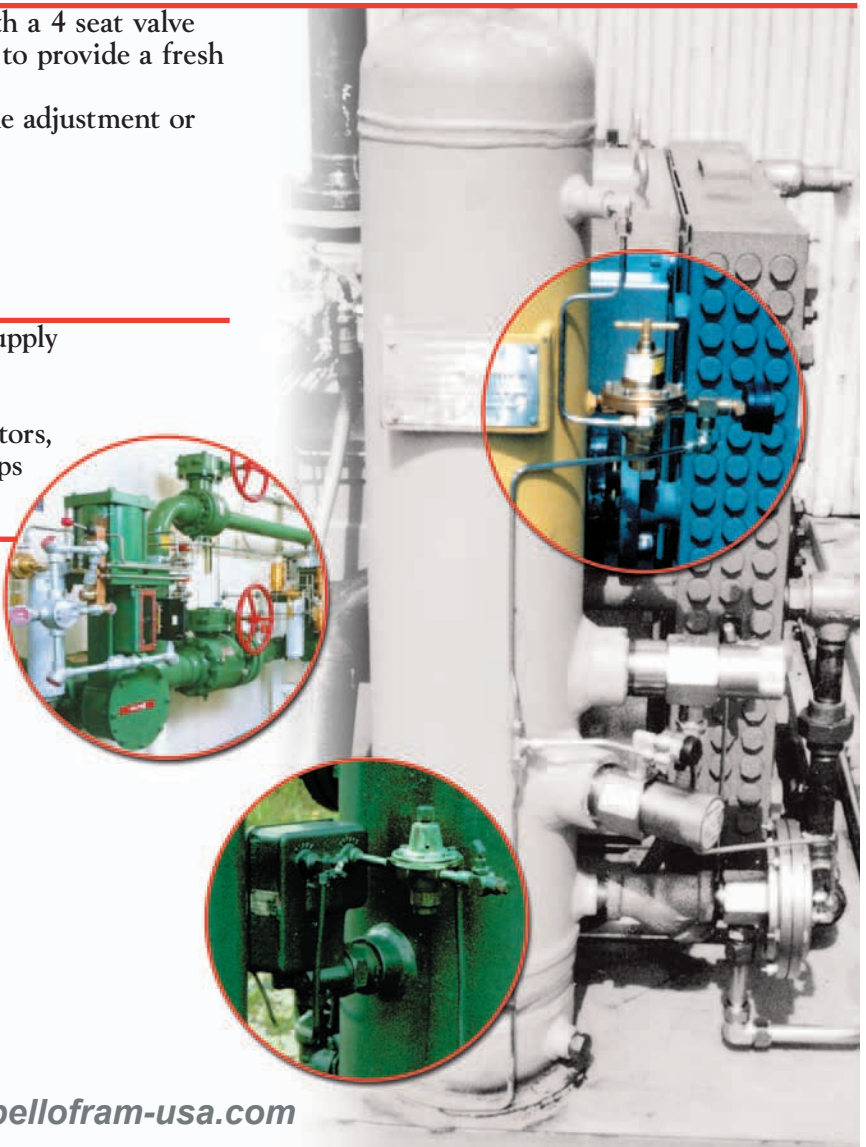
- Spare valve disks provided. Each unit comes with a 4 seat valve disk block. This block can be easily rotated 90° to provide a fresh valve disk sealing surface.
- Easily changed from tamper-resistant to T-handle adjustment or vice versa
- Largest selection of materials
- Largest selection of outlet pressures
- Largest number of outlet ports

APPLICATIONS

- First cut of high-pressure NG to control valve supply
- NG instrumentation columns
- First cuts to any downstream, low flow application, such as catalytic heaters, valve actuators, pressure controllers and chemical injection pumps

SPECIFICATIONS

Inlet	1/4" NPT
Outlet	1/4" NPT (3 Ports, STD)
Vent	4 holes (5/32" each) (STD)
	1/4" NPT (Tapped Vent Option)
Max Inlet	5500 psig, 379 BAR
Outlet Range	...	0-30 psig, 2.1 BAR
	0-60 psig, 4.1 BAR
	0-120 psig, 8.3 BAR
	0-150 psig, 10.3 BAR
	0-225 psig, 15.5 BAR
	0-500 psig, 34.5 BAR
Temp. Range	-40° F to 225° F
	-46° C to 106° C
Weight	Approx. 3 1/4 lbs. (STD)
500 psi	Approx. 3 3/4 lbs
Orifice Size	5/64"



MATERIALS OF CONSTRUCTION

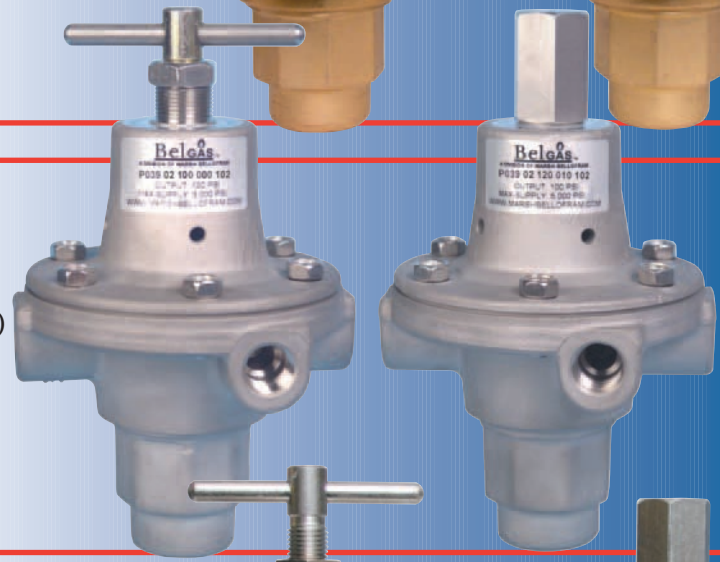
BRASS UNIT

- Body, Bonnet, Bottom Plug . . .Brass
- Tamper Resistant CoverBrass
- Diaphragm302 Stainless
- SealsTFE, Nitrile
- Valve Spring17-7^{PH} Stainless Steel
- Range SpringSpring Steel,
Chrome Silicon
- Seat MaterialNylon or TFE



STAINLESS STEEL UNIT

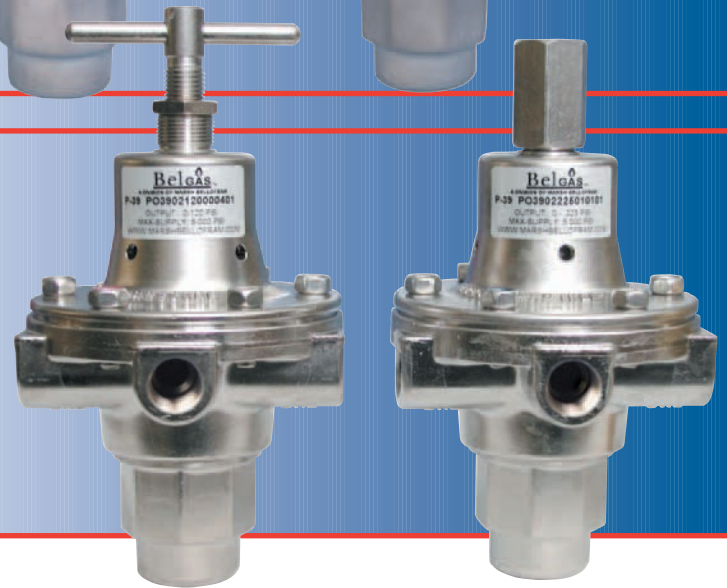
- Body, Bonnet, Bottom Plug . . .316 Stainless Steel
- Tamper Resistant Cover316 Stainless Steel
- DiaphragmMonel 400
- SealsTFE, Fluorocarbon
- Valve SpringMP35N (UNS30035)
- Range SpringSpring Steel
- Seat MaterialNylon or PTFE
(316 SS block)



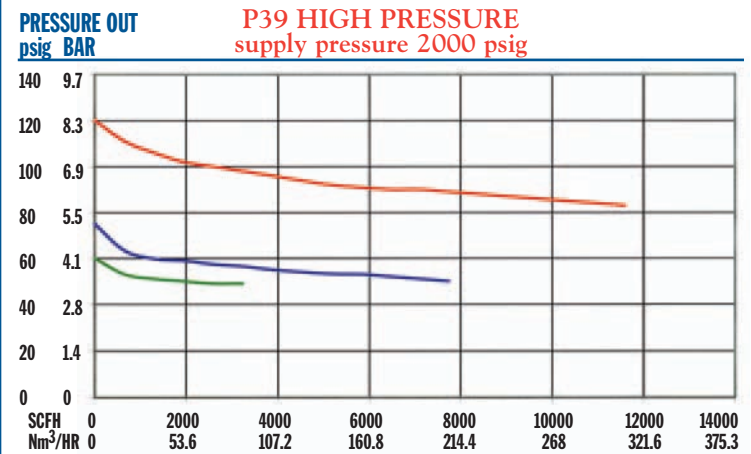
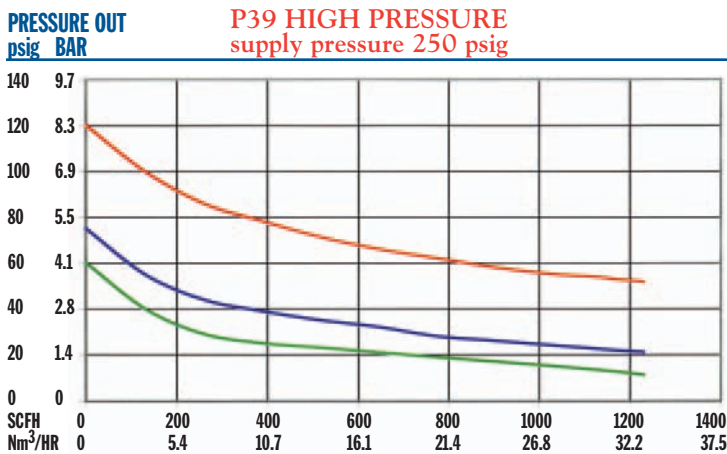
Conforms to
NACE MR0175

NICKEL PLATED UNIT

- Body, Bonnet, Bottom Plug . . .Nickel Plated Brass
- Tamper Resistant CoverNickel Plated Brass
- Diaphragm302 Stainless Steel
- SealsTFE, Nitrile
- Valve Spring17-7^{PH} Stainless Steel
(Nickel Plated)
- Range SpringSpring Steel or
Chrome Silicon
- Seat MaterialNylon or PTFE
(316 SS Block)



FLOW CHARTS



GAS FLOW
(Natural Gas @ 0.6 Specific Gravity)

— 0-120 psig — 0-150 psig — 0-225 psig

GAS FLOW
(Natural Gas SCFH @ 0.6 Specific Gravity)

— 0-120 psig — 0-150 psig — 0-225 psig

